



Quarterly Report 1Q21



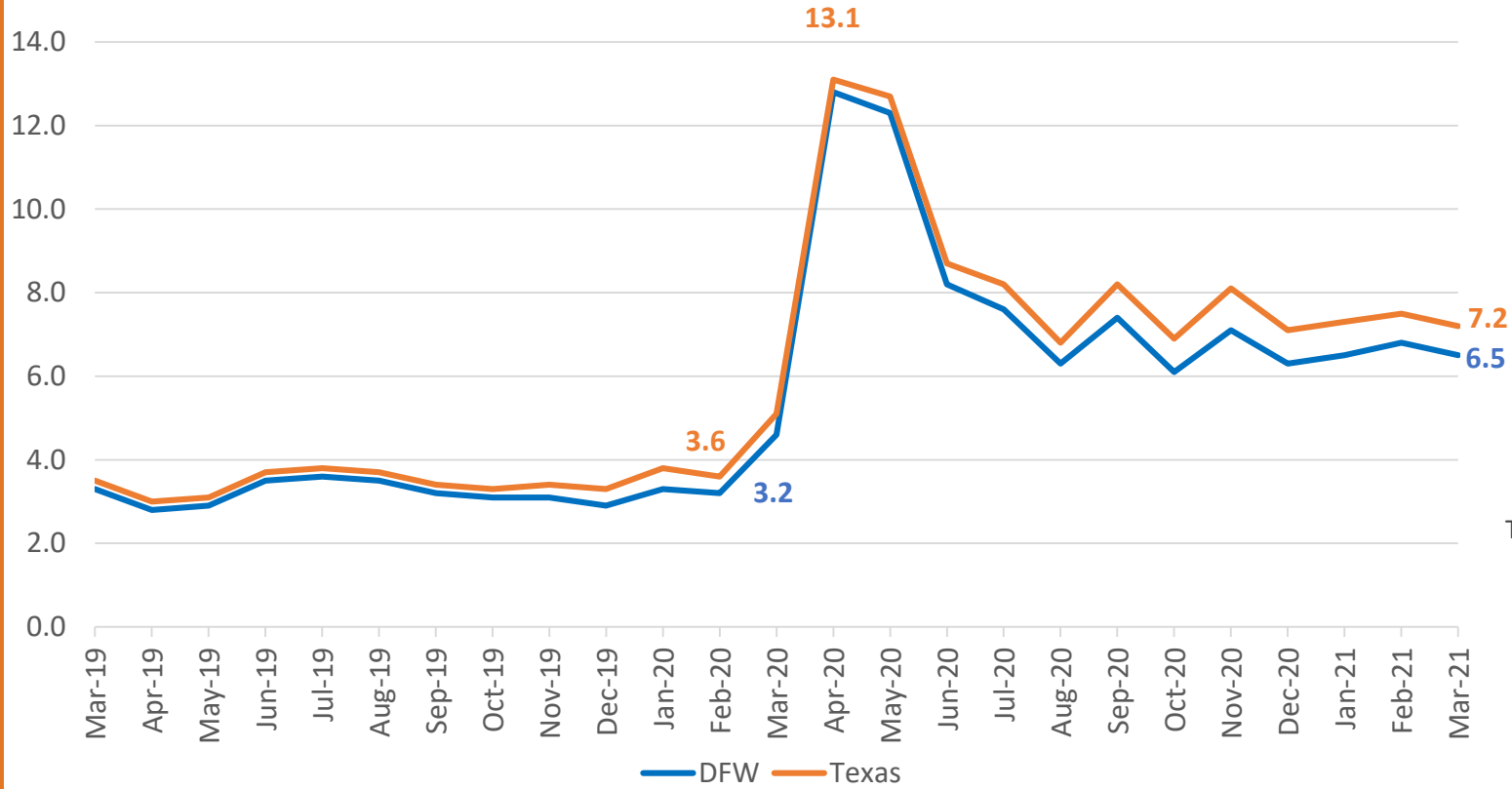
TEMPLETON
DEMOGRAPHICS

hanleywood | metrostudy

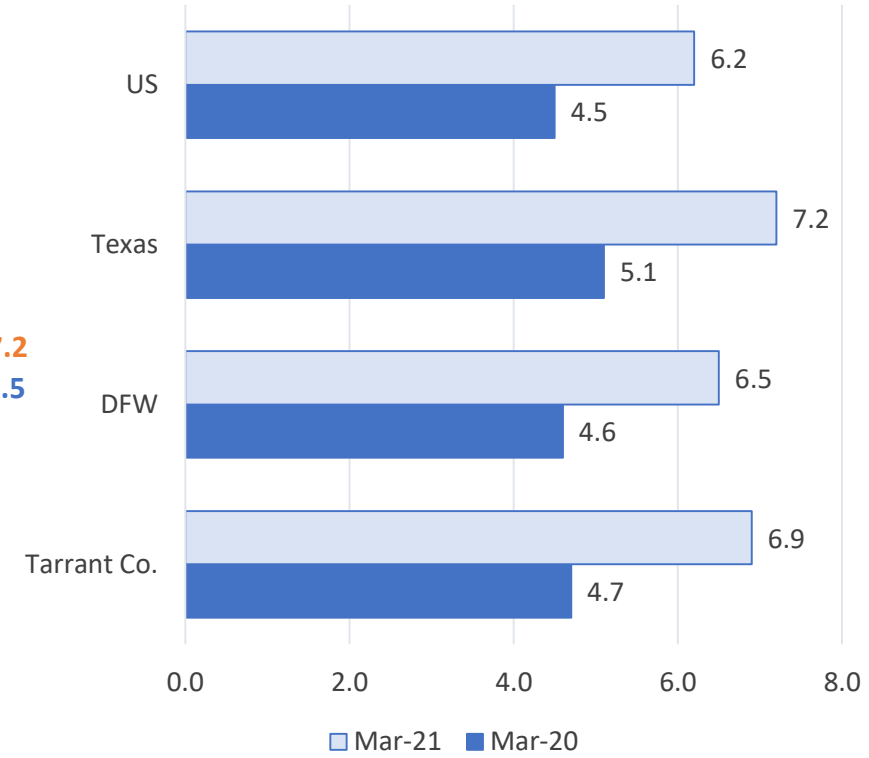


DFW MSA Economic Update

Unemployment Rate, Jan 2018 - Mar 2021

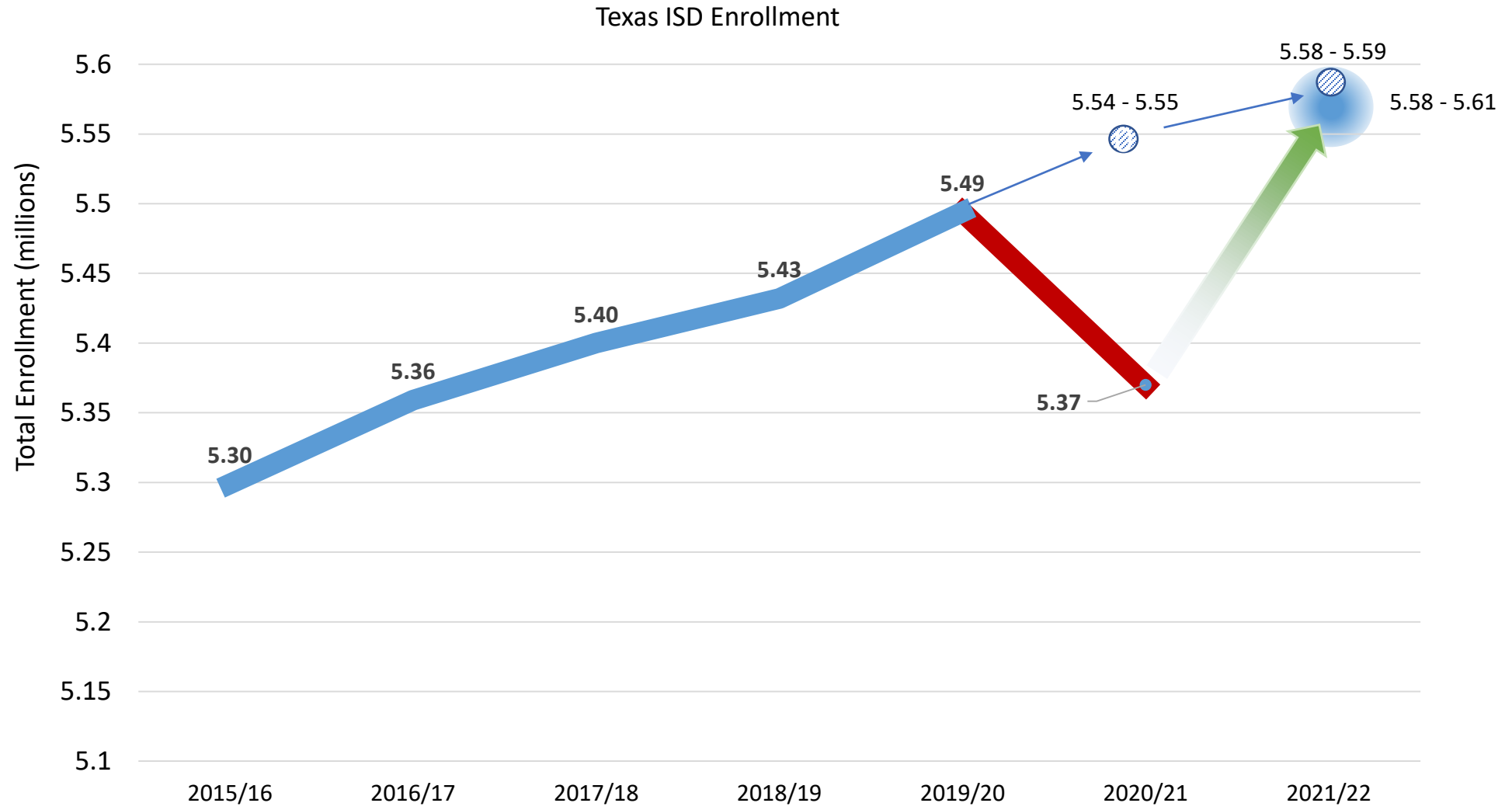


Unemployment Rate, Year Over Year





State Enrollment Trends

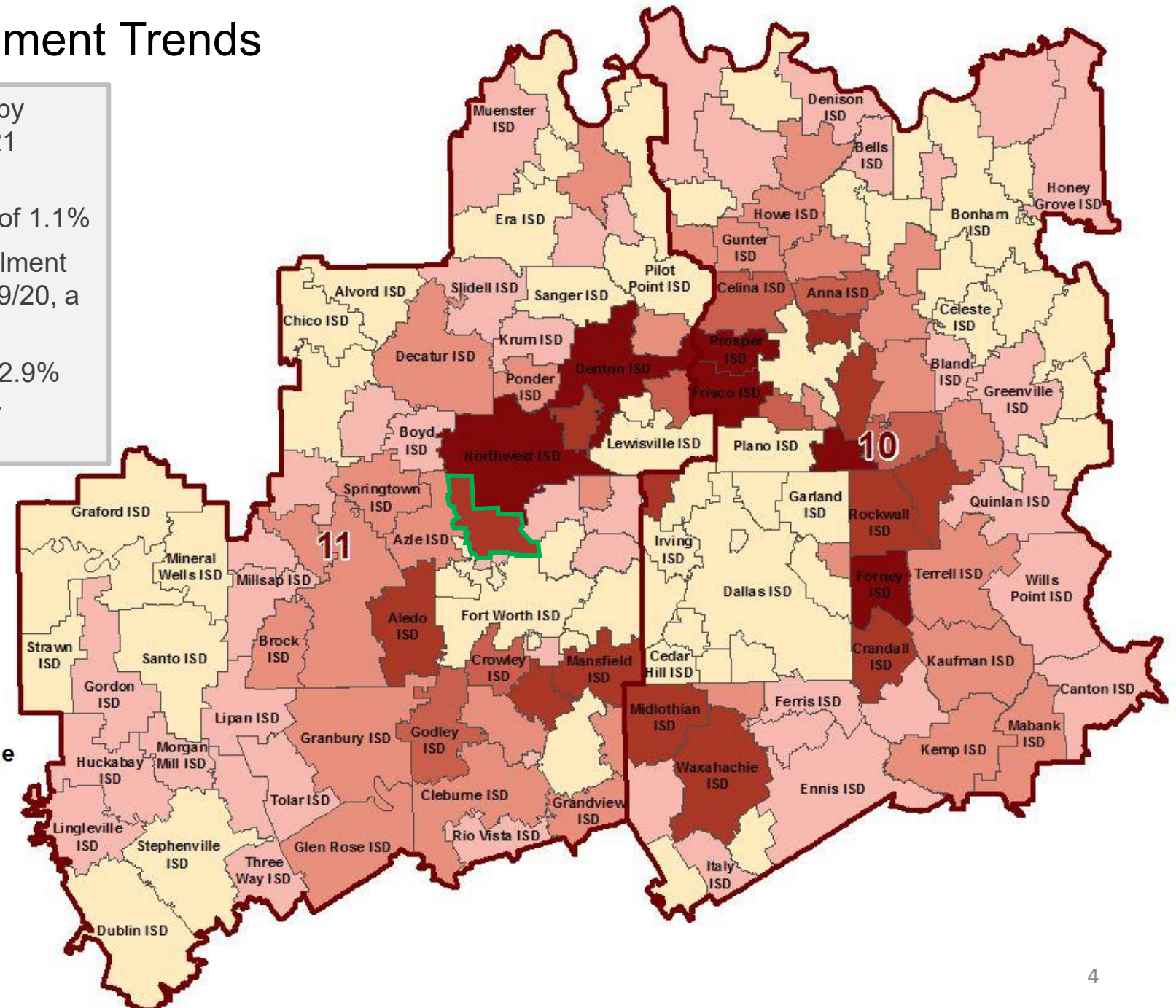
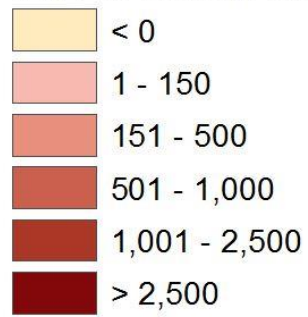




Region 10 and 11 Enrollment Trends

- EMS ISD enrollment has increased by 10.7% between 2015/16 and 2020/21
- EMS ISD enrollment increased 211 students from 2019/20, an increase of 1.1%
- Region 10 has seen an overall enrollment decline of 17,918 students from 2019/20, a decline of -2.2%
- Region 11 enrollment has declined -2.9% from 2019/20, a difference of 17,104 students

5 Yr Enrollment Change





Region 11 Enrollment Trends

Rank	DISTRICT	2015/16 Enrollment	2019/20 Enrollment	2020/21 Enrollment	5-YEAR CHANGE (15/16-20/21)	ANNUAL CHANGE (19/20-20/21)	5-YEAR PCT Growth	1-YEAR PCT Growth
1	Northwest ISD	20,967	25,040	25,383	4,416	343	21.1%	1.4%
2	Denton ISD	27,566	30,919	30,267	2,701	-652	9.8%	-2.1%
3	Eagle Mt-Saginaw ISD	19,191	21,024	21,245	2,054	221	10.7%	1.1%
4	Argyle ISD	2,243	3,483	3,795	1,552	312	69.2%	9.0%
5	Aledo ISD	5,249	6,437	6,723	1,474	286	28.1%	4.4%
6	Mansfield ISD	33,814	35,669	35,127	1,313	-542	3.9%	-1.5%
7	Burleson ISD	11,384	12,810	12,547	1,163	-263	10.2%	-2.1%
8	Little Elm ISD	7,190	8,065	8,108	918	43	12.8%	0.5%
9	Godley ISD	1,778	2,348	2,443	665	95	37.4%	4.0%
10	Crowley ISD	15,100	15,996	15,731	631	-265	4.2%	-1.7%
11	Granbury ISD	6,989	7,474	7,469	480	-5	6.9%	-0.1%
12	Brock ISD	1,299	1,606	1,765	466	159	35.9%	9.9%
13	Azle ISD	6,242	6,815	6,685	443	-130	7.1%	-1.9%
14	Decatur ISD	2,997	3,464	3,429	432	-35	14.4%	-1.0%
15	Joshua ISD	5,144	5,618	5,490	346	-128	6.7%	-2.3%
16	Aubrey ISD	2,316	2,593	2,644	328	51	14.2%	2.0%
17	Peaster ISD	1,059	1,322	1,382	323	60	30.5%	4.5%
18	Ponder ISD	1,274	1,579	1,585	311	6	24.4%	0.4%
19	Carroll ISD	8,065	8,525	8,324	259	-201	3.2%	-2.4%
20	Springtown ISD	3,406	3,584	3,619	213	35	6.3%	1.0%





DFW New Home Ranking Report

ISD Ranked by Annual Closings – 1Q21

Rank	District Name	Annual Starts	Annual Closings	Inventory	VDL	Future
1	Denton ISD	3,311	2,777	1,833	3,925	18,656
2	Northwest ISD	2,891	2,700	1,431	3,125	24,696
3	Prosper ISD	2,914	2,650	1,741	3,653	19,208
4	Frisco ISD	2,323	2,414	1,503	2,317	8,562
5	Eagle Mt.-Saginaw ISD*	2,007	2,295	652	1,241	18,735
6	Forney ISD	2,112	1,855	1,007	3,144	26,490
7	Dallas ISD	1,368	1,837	1,422	2,529	6,412
8	Princeton ISD	1,305	1,138	440	1,746	7,011
9	Rockwall ISD	1,233	1,134	715	1,555	9,135
10	Lewisville ISD	997	1,123	617	1,914	2,324
11	Royse City ISD	1,335	1,050	708	1,897	9,788
12	Crowley ISD	879	989	440	1,571	16,383
13	Melissa ISD	1,018	917	486	683	4,401
14	Mansfield ISD	1,061	910	629	1,180	6,774
15	Little Elm ISD	849	901	459	868	1,357
16	McKinney ISD	949	889	533	2,009	13,181
17	Crandall ISD	911	794	358	866	7,341
18	Fort Worth ISD	881	782	460	1,377	4,834
19	Wylie ISD	863	774	458	796	3,243
20	Waxahachie ISD	873	768	560	834	19,345

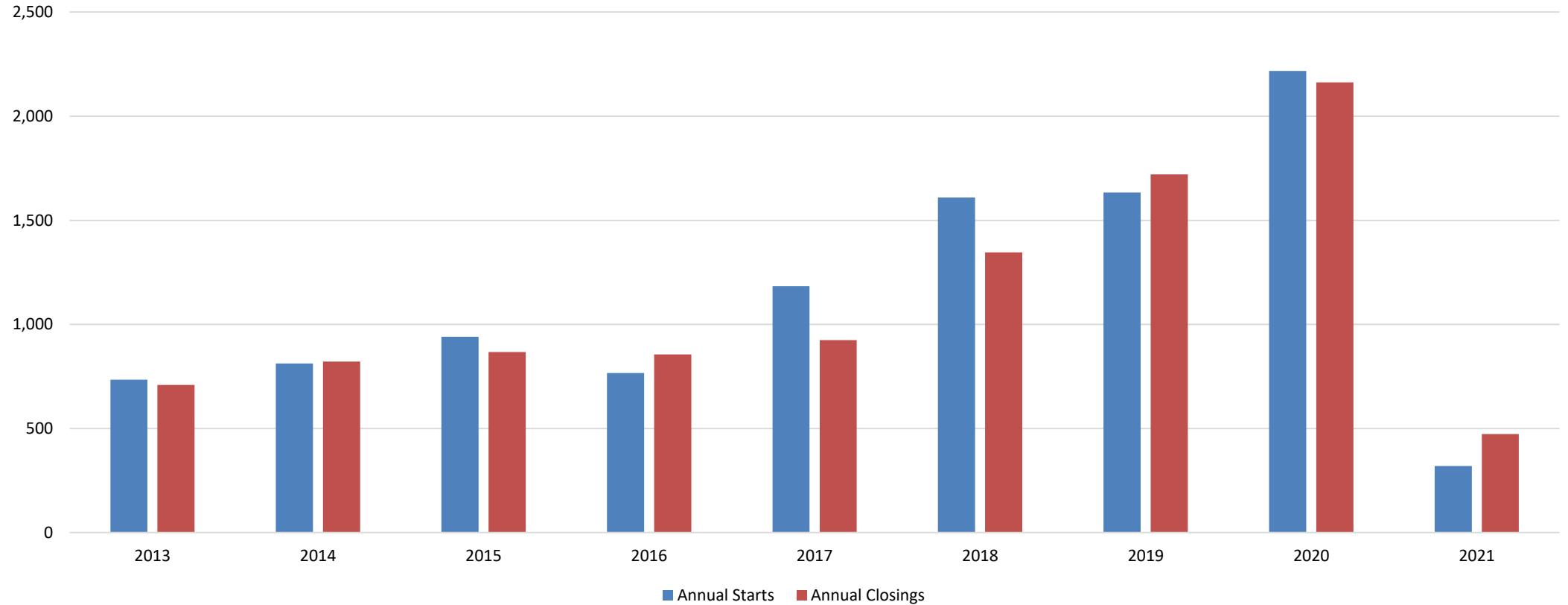
* Based on additional Templeton Demographics housing research

**Includes Age-Restricted subdivisions





ISD New Home Starts and Closings



Starts	2015	2016	2017	2018	2019	2020	2021
1Q	173	177	179	389	351	530	320
2Q	268	223	368	411	439	593	
3Q	293	243	412	293	442	514	
4Q	207	124	224	517	401	580	
Total	941	767	1,183	1,610	1,633	2,217	320

Closings	2015	2016	2017	2018	2019	2020	2021
1Q	154	189	154	295	285	340	473
2Q	220	227	204	310	483	567	
3Q	269	265	243	374	512	664	
4Q	224	175	324	367	441	591	
Total	867	856	925	1,346	1,721	2,162	473



New Housing Activity by Elementary Zone

Elementary Zone	Annual Starts	Quarter Starts	Annual Closings	Quarter Closings	Under Construction	Inventory	Vacant Dev. Lots	Future Lots
BRYSON	171	36	137	66	40	46	15	707
CHISHOLM RIDGE	153	23	158	25	46	66	52	433
COMANCHE SPRINGS	420	40	390	105	77	130	25	2,215
COPPER CREEK	190	52	236	52	51	77	250	325
DOZIER	139	23	188	22	30	37	31	317
EAGLE MOUNTAIN	70	26	66	20	39	43	371	12,234
ELKINS	257	48	234	68	73	85	202	773
GILILLAND	0	0	0	0	0	0	0	0
GREENFIELD	0	0	2	0	1	1	4	226
HIGH COUNTRY	30	0	159	3	0	0	0	47
LAKE COUNTRY	74	23	74	39	47	54	139	604
LAKE POINTE	351	14	509	30	22	34	14	253
NORTHBROOK	0	0	2	0	0	0	0	0
PARKVIEW	130	32	114	39	49	64	83	601
REMINGTON POINT	0	0	0	0	0	0	0	0
SAGINAW	0	0	0	0	0	0	0	0
WILLOW CREEK	22	3	26	4	12	15	55	0
Grand Total	2,007	320	2,295	473	487	652	1,241	18,735



Highest activity in the category



Second highest activity in the category



Third highest activity in the category





District Housing Overview

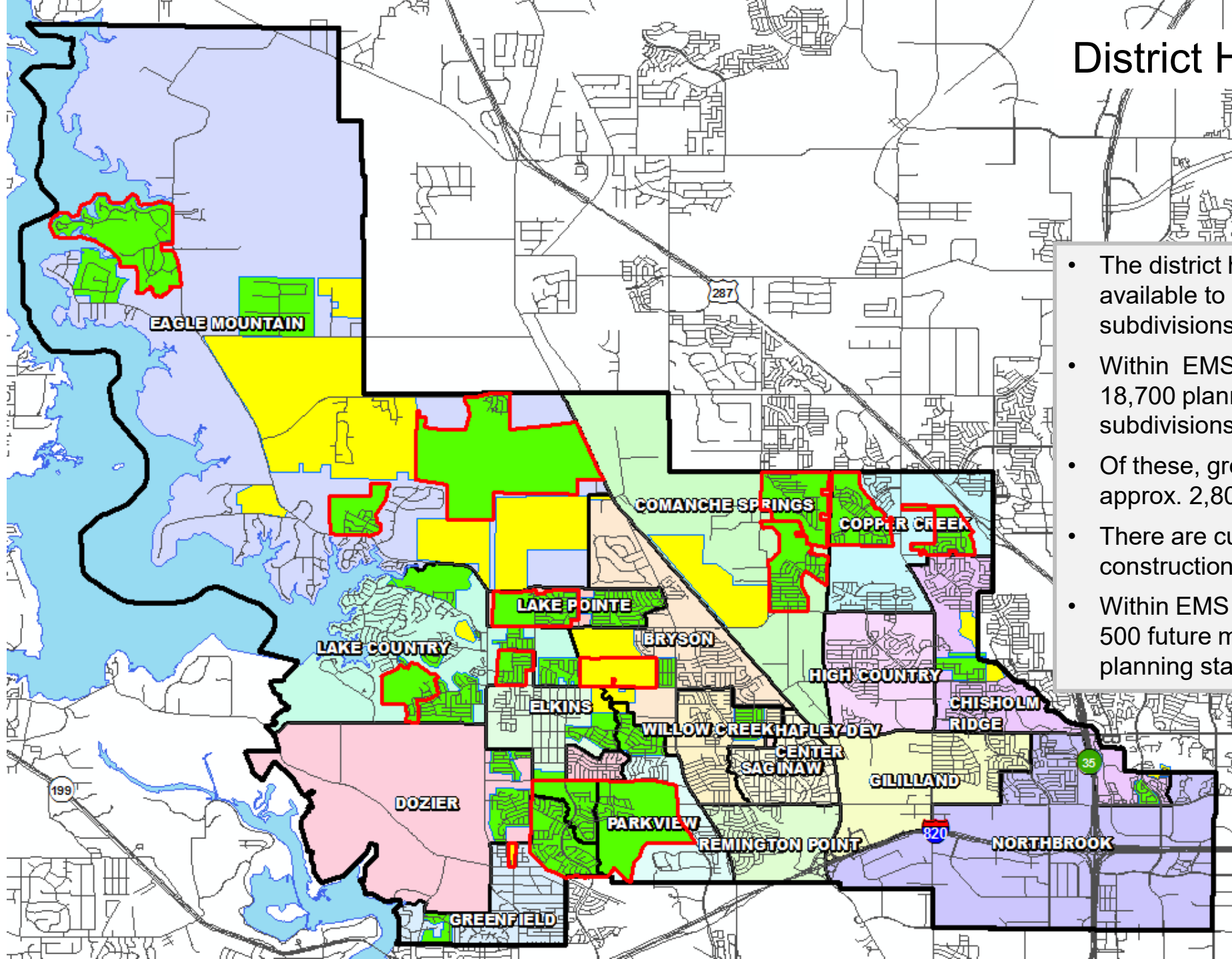
Subdivisions

ACTIVE

FUTURE

Groundwork Underway

- The district has more than 1,200 lots available to build on across 32 subdivisions
- Within EMS ISD there are more than 18,700 planned future lots in 37 subdivisions
- Of these, groundwork is underway on approx. 2,800 lots within EMS ISD
- There are currently 120 units under construction in the district
- Within EMS ISD there are roughly 500 future multi-family units in the planning stages

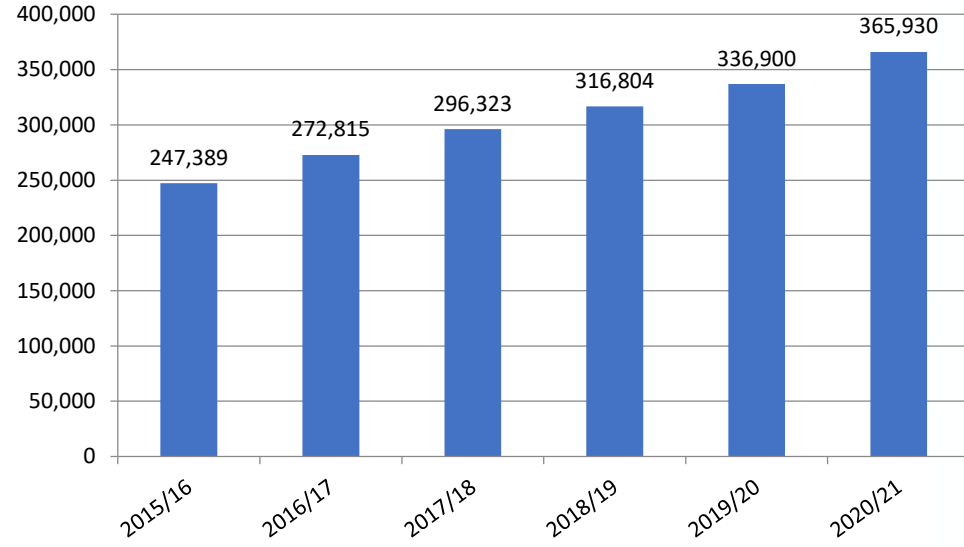




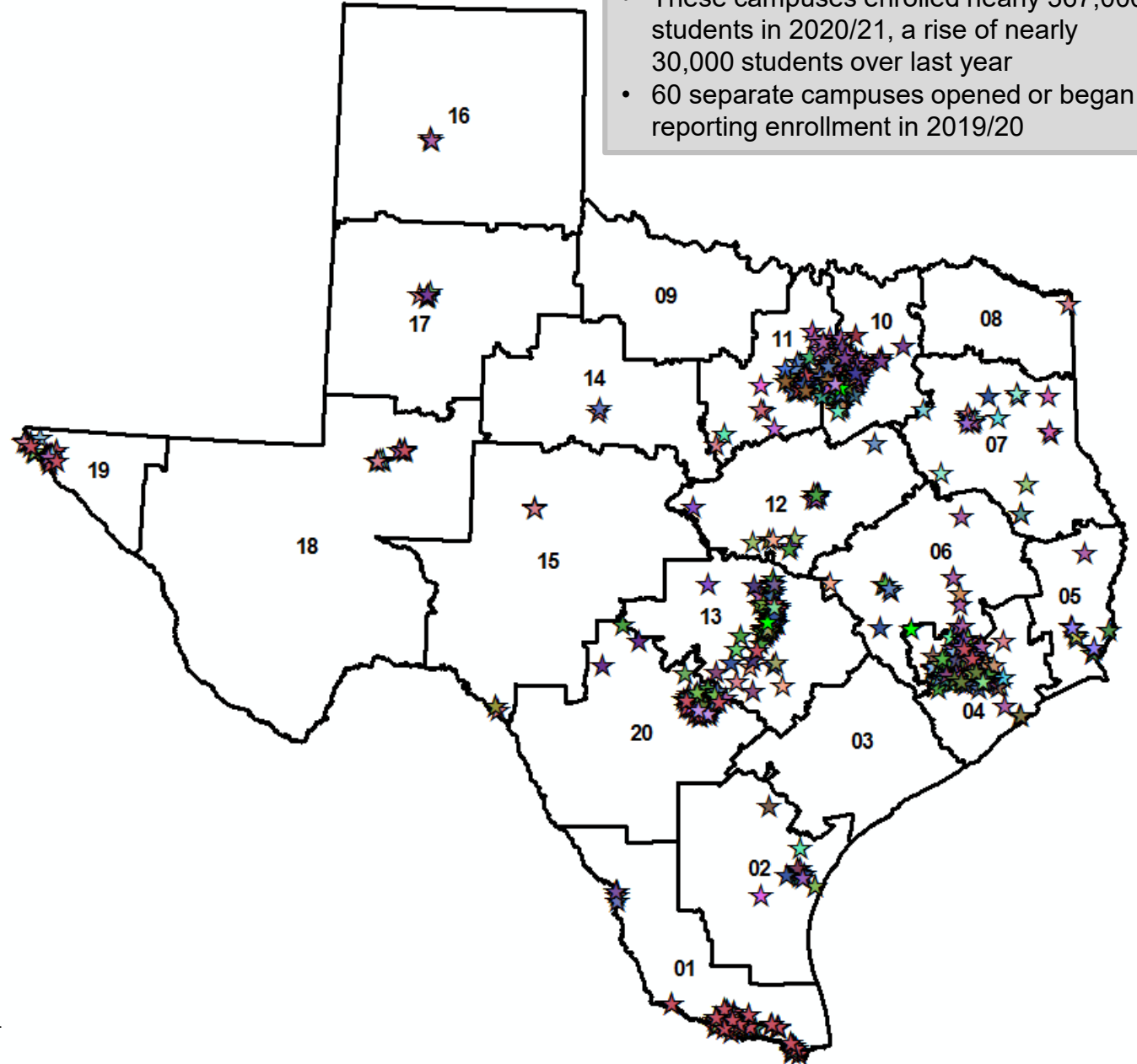
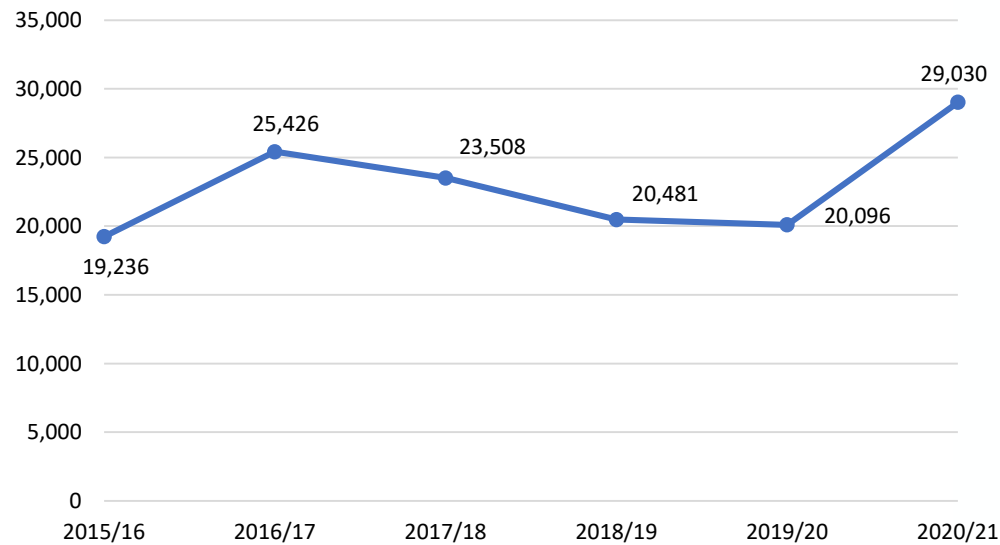
Charter Schools in Texas

- There are currently more than 830 charter school campuses open across Texas
- These campuses enrolled nearly 367,000 students in 2020/21, a rise of nearly 30,000 students over last year
- 60 separate campuses opened or began reporting enrollment in 2019/20

Total Charter Enrollment



Charter Enrollment Change





Ten Year Forecast by Grade Level

	EE	PK	K	1st	2nd	3rd	4th	5th	6th	7th	8th	9th	10th	11th	12th	Total	Total Growth	Total %
2016/17	90	365	1,327	1,363	1,404	1,590	1,583	1,510	1,512	1,474	1,552	1,595	1,506	1,488	1,294	19,653		
2017/18	93	431	1,255	1,340	1,328	1,389	1,518	1,535	1,466	1,489	1,467	1,620	1,578	1,417	1,391	19,317	-336	-1.71%
2018/19	110	413	1,357	1,396	1,400	1,398	1,498	1,639	1,645	1,597	1,546	1,621	1,632	1,491	1,311	20,054	737	3.82%
2019/20	67	398	1,417	1,468	1,444	1,476	1,497	1,601	1,742	1,781	1,671	1,777	1,648	1,587	1,419	20,993	939	4.68%
FALL 2020/21	49	334	1,341	1,456	1,505	1,493	1,482	1,546	1,644	1,807	1,785	1,806	1,749	1,626	1,484	21,107	114	0.54%
JAN 2021	64	365	1,381	1,487	1,533	1,507	1,507	1,584	1,656	1,823	1,796	1,805	1,743	1,572	1,412	21,235	128	0.61%
2021/22	55	481	1,514	1,568	1,598	1,620	1,607	1,596	1,640	1,711	1,869	1,966	1,811	1,705	1,541	22,281	1,174	5.56%
2022/23	58	505	1,596	1,688	1,662	1,719	1,727	1,715	1,775	1,730	1,783	2,000	1,974	1,737	1,592	23,260	979	4.39%
2023/24	61	531	1,685	1,774	1,795	1,766	1,822	1,826	1,887	1,871	1,810	1,975	1,993	1,914	1,628	24,339	1,079	4.64%
2024/25	64	556	1,769	1,835	1,860	1,906	1,860	1,926	1,881	1,978	1,923	1,959	1,977	1,930	1,798	25,222	883	3.63%
2025/26	67	574	1,833	1,926	1,913	1,969	1,988	1,949	1,975	1,967	2,043	2,099	1,961	1,913	1,808	25,985	764	3.03%
2026/27	68	586	1,874	1,992	1,987	2,010	2,041	2,060	1,981	2,062	2,023	2,227	2,090	1,898	1,793	26,692	707	2.72%
2027/28	71	610	1,954	2,031	2,051	2,077	2,069	2,117	2,077	2,065	2,111	2,203	2,222	2,026	1,779	27,463	771	2.89%
2028/29	72	620	1,990	2,109	2,090	2,143	2,139	2,137	2,148	2,173	2,101	2,238	2,171	2,145	1,898	28,175	712	2.59%
2029/30	74	638	2,050	2,140	2,162	2,178	2,200	2,214	2,154	2,245	2,210	2,267	2,222	2,101	2,010	28,864	690	2.45%
2030/31	77	656	2,112	2,204	2,191	2,251	2,245	2,279	2,230	2,248	2,284	2,379	2,249	2,149	1,969	29,522	658	2.28%

Yellow box = largest grade per year
Green box = second largest grade per year



Ten Year Forecast by Campus

Campus	Capacity	History	Fall	Enrollment Projections									
		2019/20	2020/21	2021/22	2022/23	2023/24	2024/25	2025/26	2026/27	2027/28	2028/29	2029/30	2030/31
HAFLEY DEVELOPMENT CENTER	512	465	347	500	527	556	584	605	619	645	657	676	697
BRYSON ELEMENTARY	675	541	543	536	562	586	600	604	618	629	639	635	634
CHISHOLM RIDGE ELEMENTARY	803	647	614	661	701	741	781	809	834	851	861	876	886
COMANCHE SPRINGS ELEMENTARY	753	829	467	580	689	793	915	1,002	1,095	1,204	1,303	1,369	1,429
COPPER CREEK ELEMENTARY	803	0	430	464	509	547	595	620	639	648	646	656	670
DOZIER ELEMENTARY	803	570	618	663	732	783	837	871	886	900	898	905	903
EAGLE MOUNTAIN ELEMENTARY	758	664	628	431	455	467	474	511	552	594	642	704	775
ELKINS ELEMENTARY	736	456	517	547	581	616	646	685	698	708	706	708	719
GILILLAND ELEMENTARY	734	486	452	472	471	475	475	487	496	493	488	483	478
GREENFIELD ELEMENTARY	803	768	670	746	756	749	750	746	759	766	784	804	821
HIGH COUNTRY ELEMENTARY	745	560	550	600	642	661	702	708	696	705	706	727	744
LAKE COUNTRY ELEMENTARY	803	0	0	518	560	594	618	643	679	711	754	801	846
LAKE POINTE ELEMENTARY	779	804	882	713	786	862	925	977	1,023	1,048	1,076	1,112	1,150
NORTHBROOK ELEMENTARY	779	547	525	569	585	617	616	626	627	629	632	636	639
PARKVIEW ELEMENTARY	779	537	515	540	586	635	663	702	751	793	827	863	908
REMINGTON POINT ELEMENTARY	758	604	548	570	574	596	598	616	628	647	663	667	678
SAGINAW ELEMENTARY	519	336	322	330	328	329	324	314	316	312	313	318	320
WILLOW CREEK ELEMENTARY	727	600	578	598	625	654	673	694	703	698	706	715	717
ELEMENTARY TOTALS	13,269	9,414	9,206	10,038	10,669	11,261	11,776	12,219	12,618	12,980	13,301	13,655	14,014
Elementary Percent Change		2.204%	-2.21%	9.04%	6.28%	5.55%	4.57%	3.77%	3.26%	2.87%	2.47%	2.67%	2.63%
Elementary Absolute Change		203	-208	832	631	592	515	444	399	362	321	355	359

Green box = within 5% of capacity
 Yellow box = over 100% capacity





Ten Year Forecast by Campus

Campus	Capacity	History	Fall	Enrollment Projections									
		2019/20	2020/21	2021/22	2022/23	2023/24	2024/25	2025/26	2026/27	2027/28	2028/29	2029/30	2030/31
CREEKVIEW MIDDLE SCHOOL	1,078	831	806	757	749	798	857	863	851	882	923	948	960
HIGHLAND MIDDLE SCHOOL	1,050	925	841	811	806	862	894	896	907	947	984	984	993
PRAIRIE VISTA MIDDLE SCHOOL	1,002	752	842	823	845	888	932	939	942	967	1,005	1,037	1,060
WAYSIDE MIDDLE SCHOOL	1,002	921	954	998	1,022	1,099	1,129	1,230	1,262	1,292	1,308	1,378	1,424
WILLKIE MIDDLE SCHOOL	1,002	718	715	755	810	885	898	969	984	1,026	1,032	1,046	1,079
MARINE CREEK MIDDLE SCHOOL	1,200	1,040	1,073	1,071	1,051	1,031	1,067	1,083	1,115	1,134	1,165	1,211	1,241
MIDDLE SCHOOL TOTALS	6,334	5,187	5,231	5,215	5,283	5,563	5,777	5,980	6,061	6,248	6,417	6,604	6,757
Middle School Percent Change		8.58%	0.85%	-0.31%	1.30%	5.30%	3.85%	3.51%	1.35%	3.09%	2.70%	2.91%	2.32%
Middle School Absolute Change		410	44	-16	68	280	214	203	81	187	169	187	153
BOSWELL HIGH SCHOOL		2,183	2,255	2,346	2,463	2,529	2,633	2,683	2,789	2,903	2,982	3,061	3,130
SAGINAW HIGH SCHOOL		1,925	2,009	2,169	2,265	2,338	2,352	2,380	2,432	2,492	2,593	2,602	2,624
CHISHOLM TRAIL HIGH SCHOOL		2,207	2,290	2,397	2,464	2,532	2,568	2,607	2,676	2,724	2,766	2,826	2,881
WATSON HIGH SCHOOL		97	104	104	104	104	104	104	104	104	104	104	104
HIGH SCHOOL TOTALS		6,412	6,658	7,016	7,296	7,503	7,657	7,774	8,001	8,223	8,445	8,593	8,739
High School Percent Change		6.28%	3.84%	5.38%	3.99%	2.84%	2.05%	1.53%	2.92%	2.77%	2.70%	1.75%	1.70%
High School Absolute Change		379	246	358	280	207	154	117	227	222	222	148	146
TARRANT COUNTY JJAEP		4	1	1	1	1	1	1	1	1	1	1	1
ALTERNATIVE DISCIPLINE SCHOOL		22	11	11	11	11	11	11	11	11	11	11	11
ALTERNATIVE SCHOOL TOTALS		26	12	12	12	12	12	12	12	12	12	12	12
DISTRICT TOTALS		21,039	21,107	22,281	23,260	24,339	25,222	25,985	26,692	27,463	28,175	28,864	29,522
District Percent Change		4.91%	0.32%	5.56%	4.39%	4.64%	3.63%	3.03%	2.72%	2.89%	2.59%	2.45%	2.28%
District Absolute Change		985	68	1,174	979	1,079	883	764	707	771	712	690	658

Green box = within 5% of capacity
 Yellow box = over 100% capacity

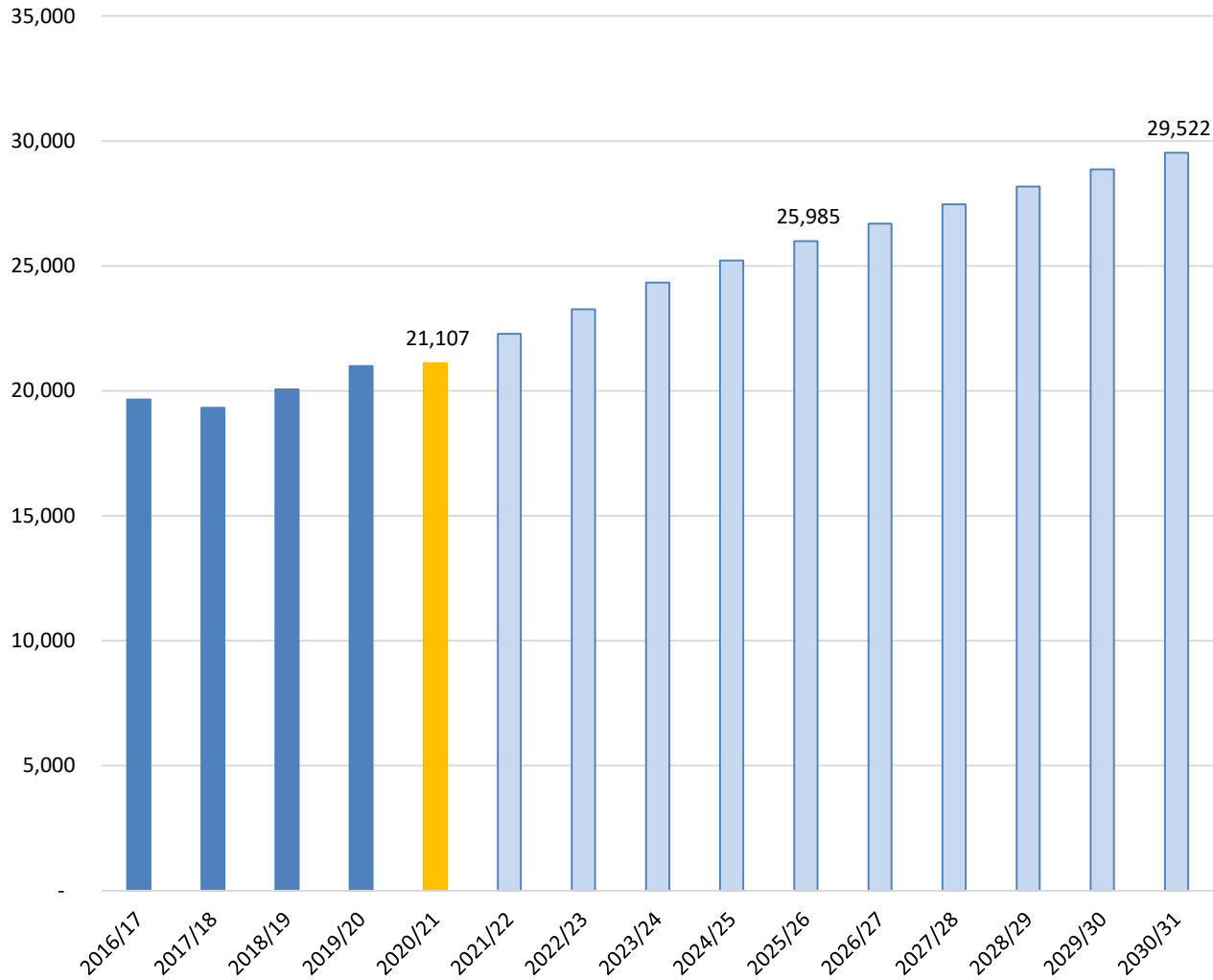




Key Takeaways



Enrollment Forecast



- EMS ISD enrollment has increased by 10.7% between 2015/16 and 2020/21
- EMS ISD enrollment increased 211 students from 2019/20, an increase of 1.1%
- The district has more than 1,200 lots available to build on across 32 subdivisions
- Within EMS ISD there are more than 18,700 planned future lots in 37 subdivisions
- Groundwork is underway on 2,800 lots in 13 subdivisions
- EMS ISD will enroll more than 25,900 students for the 2025/26 school year, and more than 29,500 by 2030/31